

TrackMyMachines

Machine monitoring solution



Rowan Easter-Robinson
rowan@trackmymachines.com



What is it?

TMM helps you to instantly see your **machine status** from your phone and laptop.

It is a **cost-effective** and simple solution.

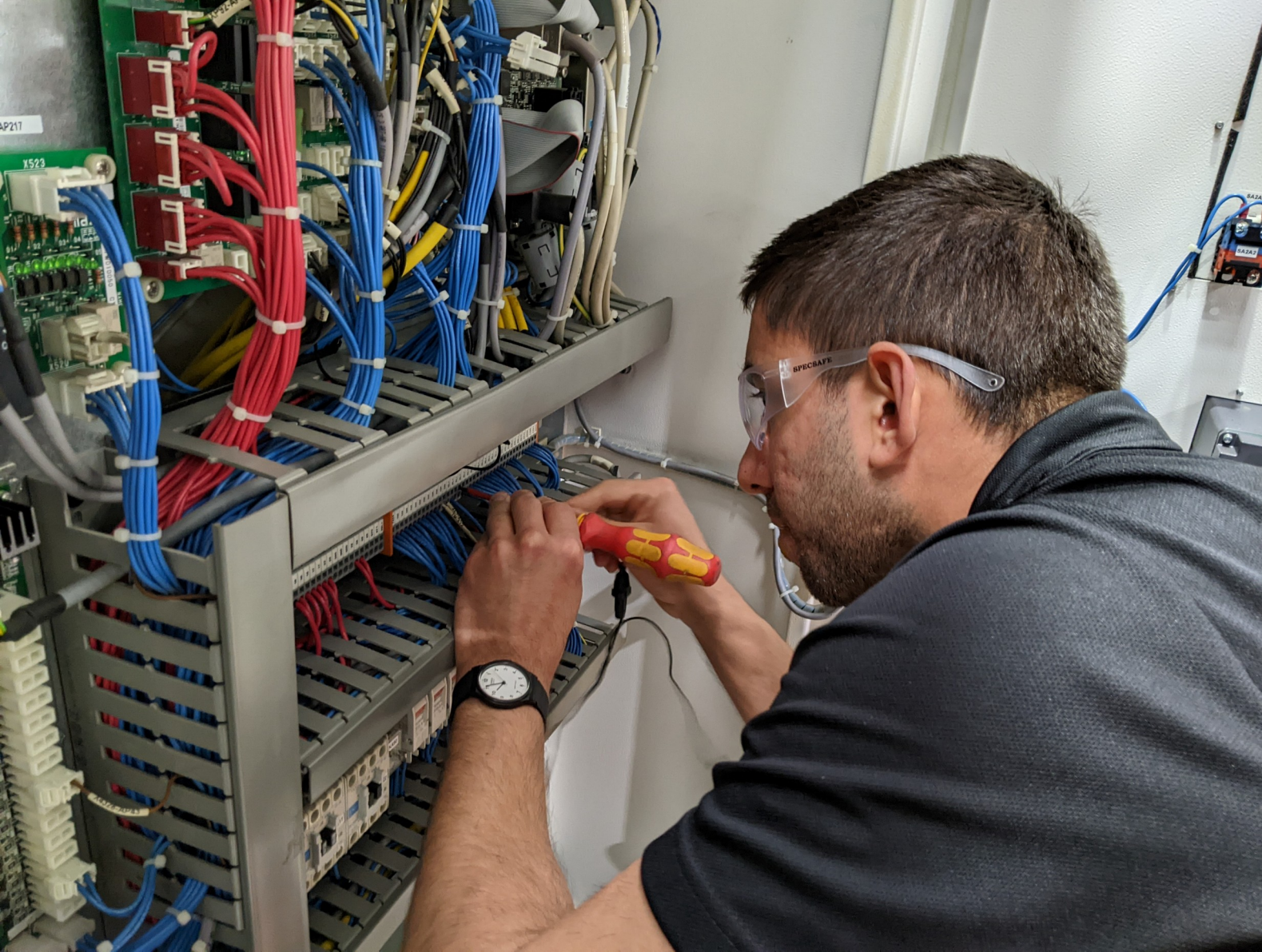
Allows you to create **custom alerts**.

Can be installed on any machinery that draws power

We use current sensors to indicate **productive time**



*TMM
device*



*Self-Installation
of **TMM** system*



*TMM Hardware
installed in the
Machine
cabinet*

Benefits

Identify **and** fix inefficiencies in the manufacturing process

- You can measure:
 - Machine uptime and downtime
 - Cycle times
 - Changeover times
 - Setup times
 - Downtime reasons (with operator input)

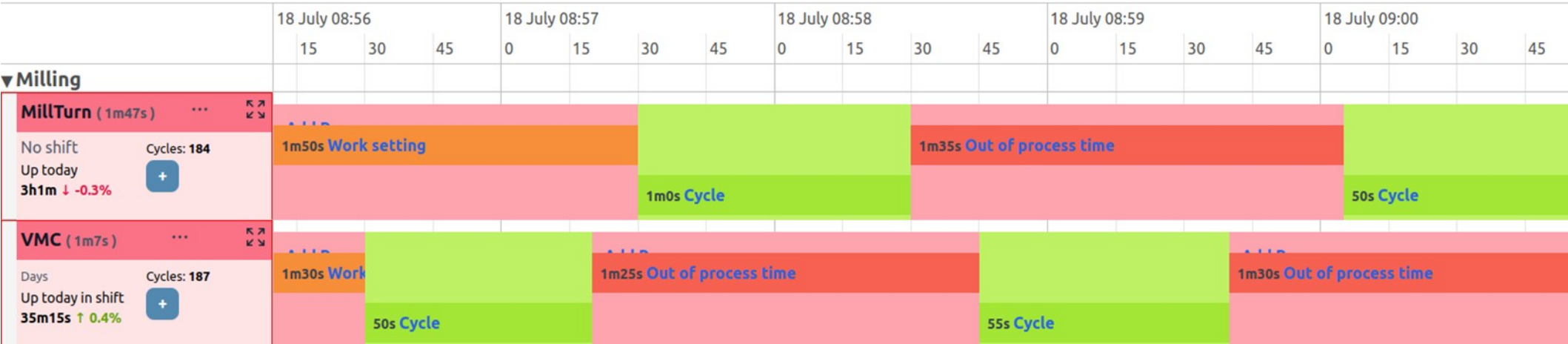
What can you identify and solve with TMM?

- Time spent waiting for 1st off inspection
- Too much operator intervention
- Incorrect person and machine ratio
- Incorrect casting size and shape
- Overnight stoppage
- Tool setting taking too long
- Long changeovers
- Long cycle times

How is the data collected?

- 1. TMM** Hardware on each machine sends data to our servers through WiFi or Ethernet.
- 2. We** present the data to **you** through our powerful web application.
- 3. You** can download your data **anytime** for **offline** analysis.

Production timeline



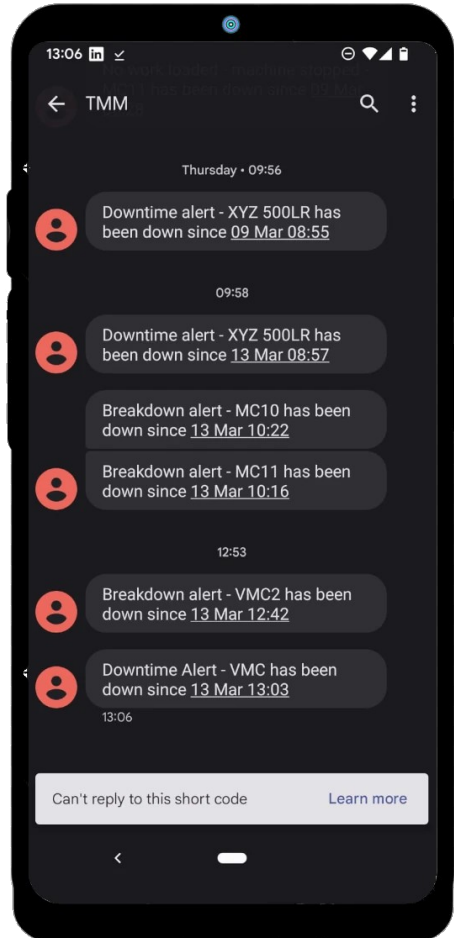
Live stream showing every machine in your workshop.
Helping you to **identify issues right now!**

Downtime Reasons



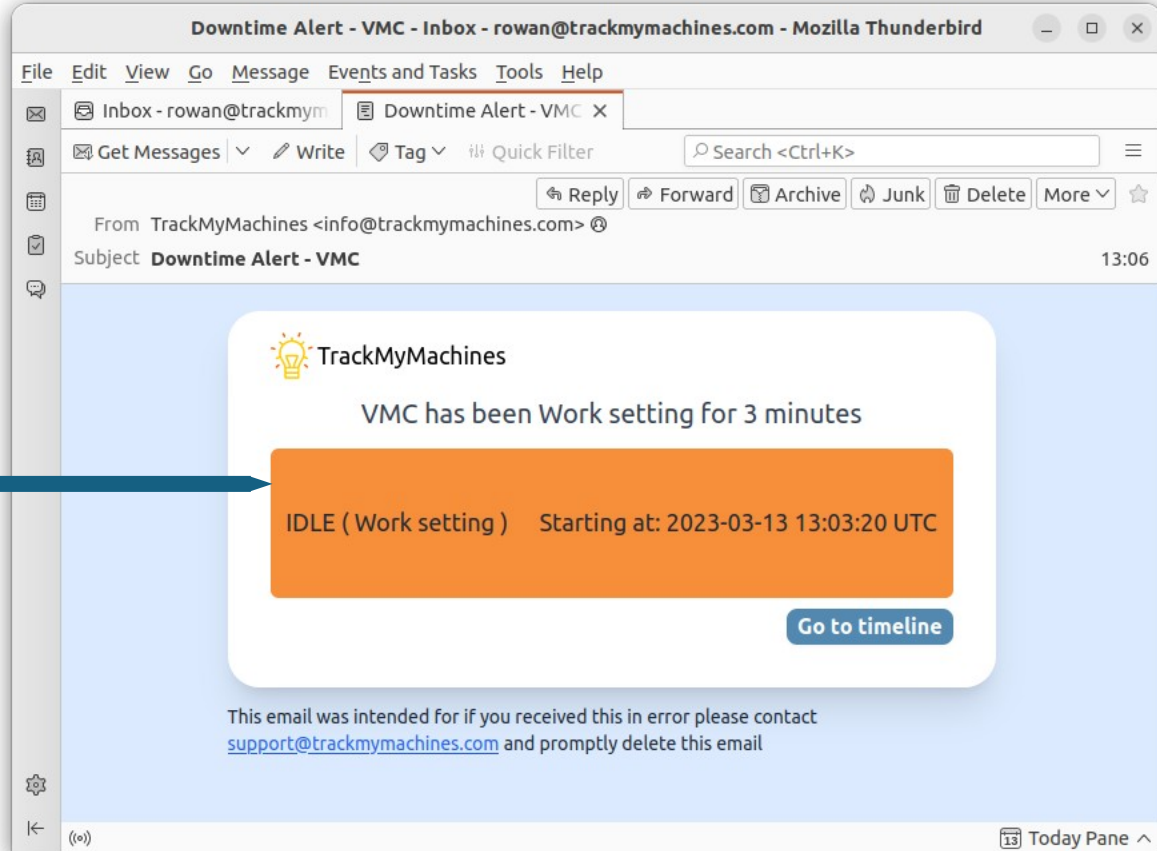
Operators can use their hardware or tablets on machinery.

Downtime Alerts



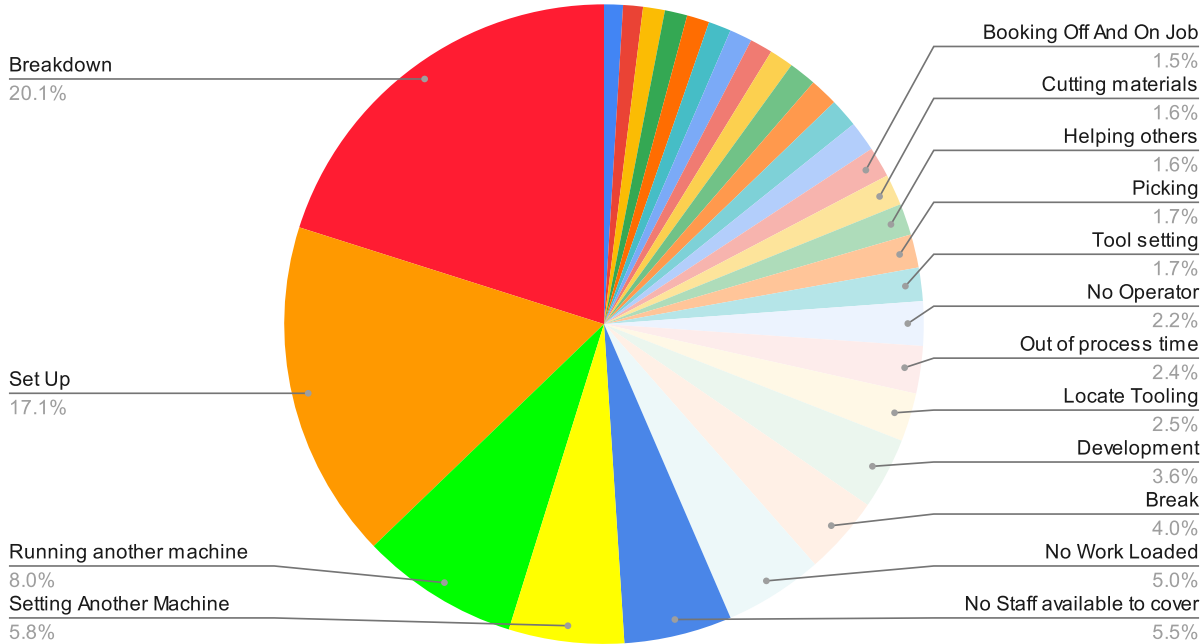
Straight to your phone or laptop.

Custom to your needs.



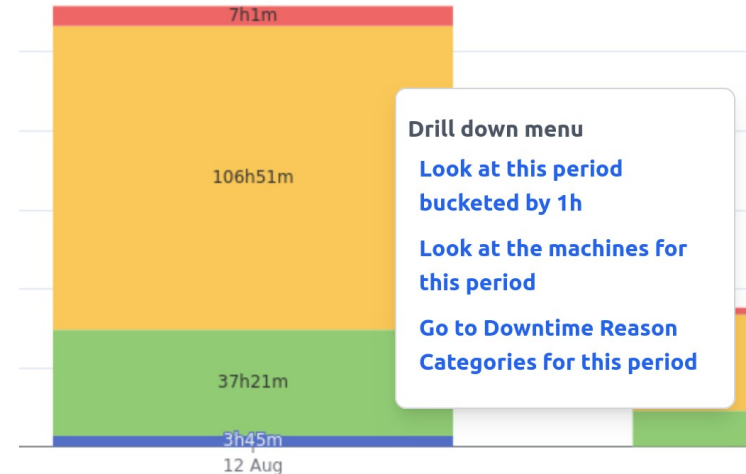
Dashboards and charts

Proportion of Downtime Reasons 2024 Jan-June



Drill down into your data
Generate PDF reports

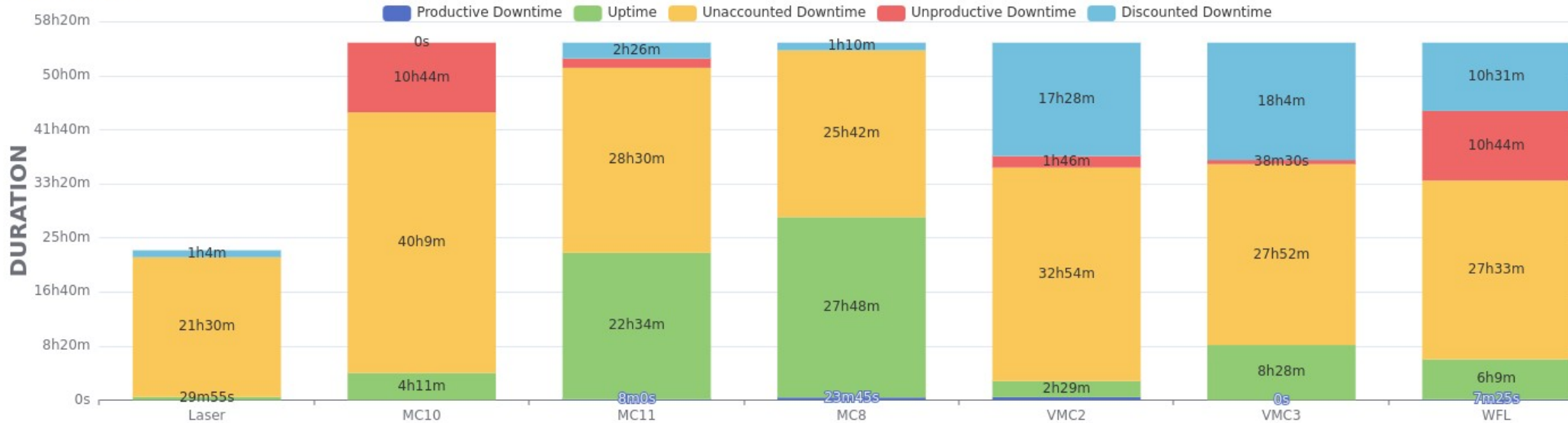
Productive Downtime Uptime Unaccounted Downtime Unproductive Downtime



High-quality charts and plots
Download raw data as .XLSX, or image as .PNG

Downtime analysis chart

DOWNTIME ANALYSIS



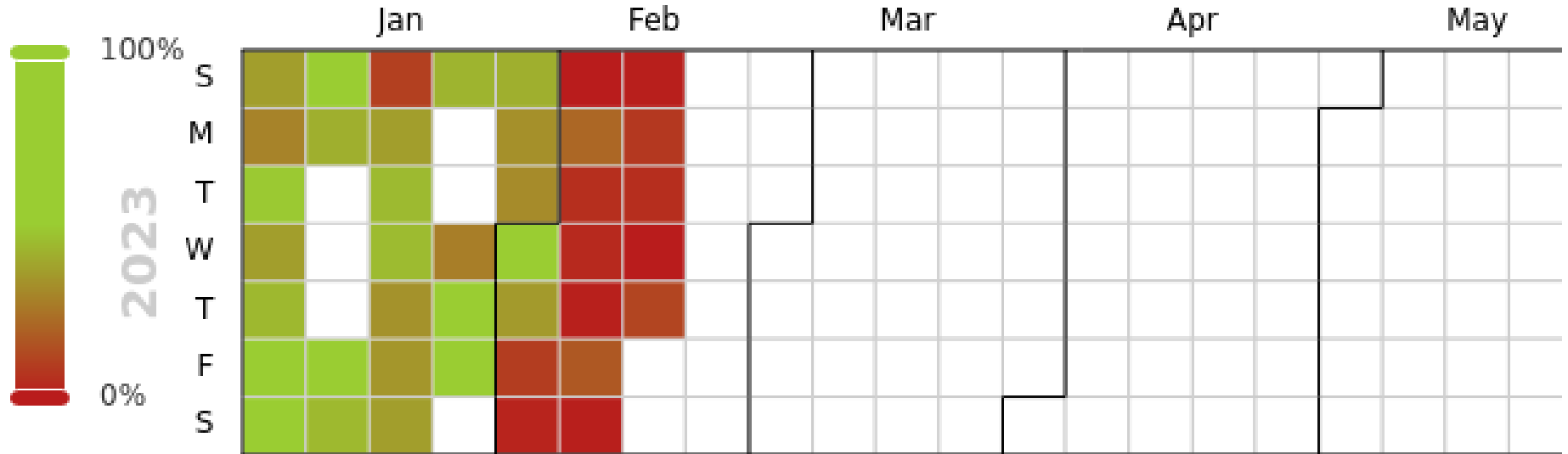
Showing MC8, VMC2, WFL, VMC3, MC10, MC11, Laser In shift from 08 Jul 00:00 to 14 Jul 23:59 bucketed by max grouped by Machine

Data presentation is explained thoroughly through **TMM web application.**

**With TrackMyMachines you can see
your...**

Factory usage over the year

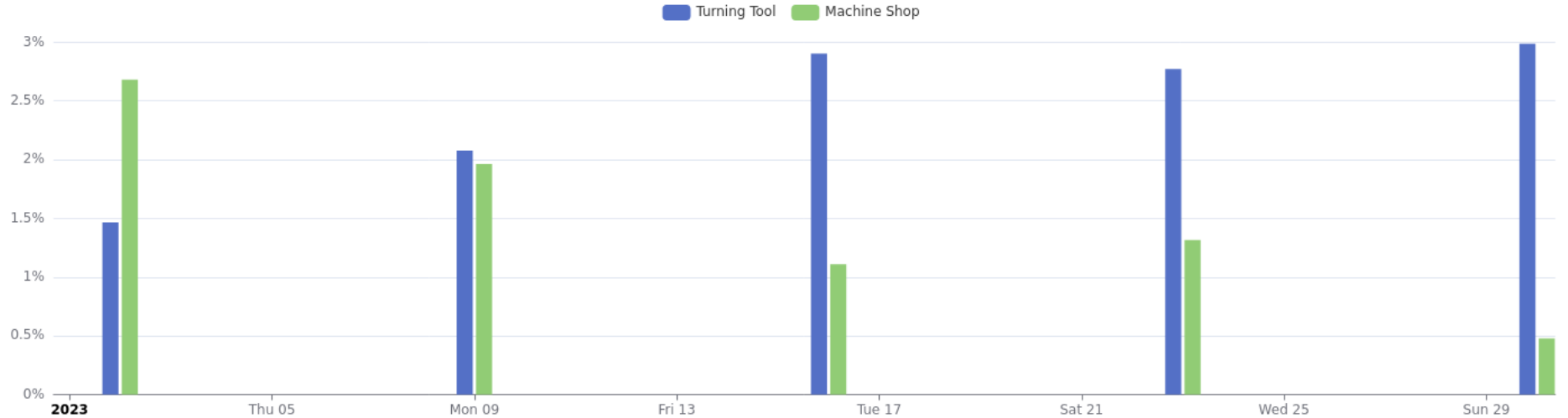
CALENDAR



Showing from 01 Jan 00:00 to 31 Dec 23:59 bucketed 1d grouped by factory (Ignore shift)

Monthly usage per cell

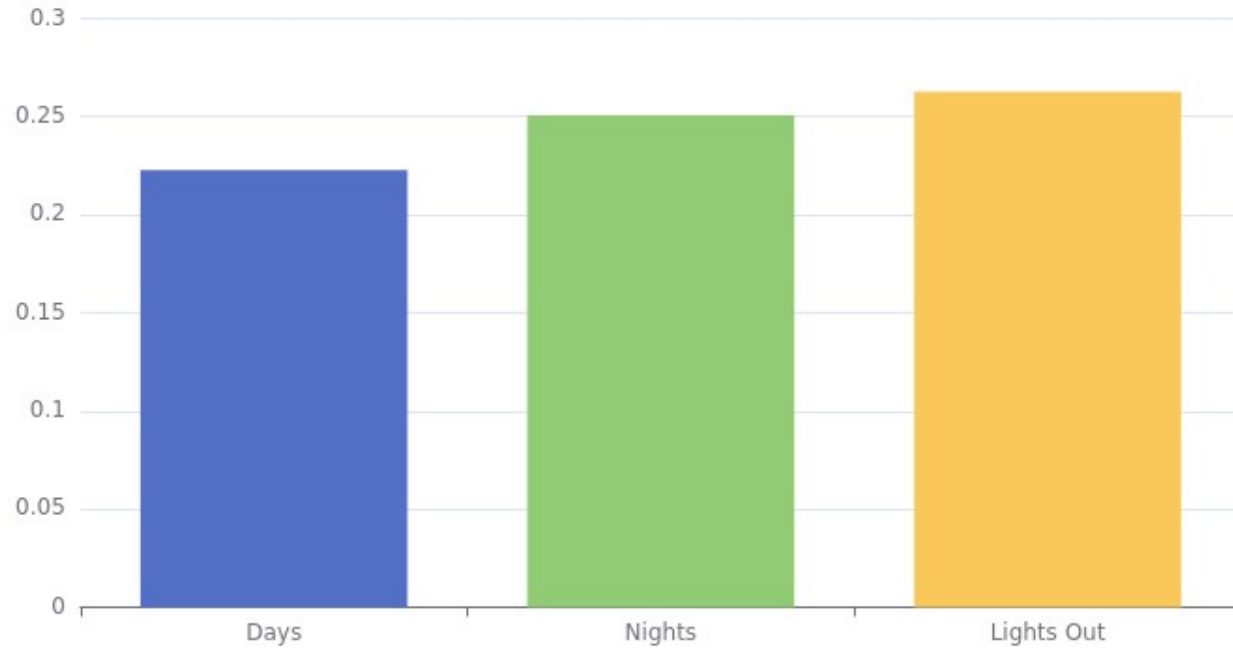
MACHINE USAGE



Showing from 01 Jan 00:00 to 01 Feb 00:00 bucketed 1w grouped by area (Ignore shift)

Shift breakdown

SHIFT BREAKDOWN



Showing from 13 Feb 00:00 to 19 Feb 23:59 bucketed grouped by shift_pattern (Ignore shift)

Quotes from customers

“I look at it in the morning, and I can see what's happened on the night shift. It's so easy now.”

“In the first week we've measured cycle times for the first time on components we've been making for 50 years”

For a ***free trial*** contact

Rowan Easter-Robinson
Founder

rowan@trackmymachines.com

Ask for more information or visit

TrackMyMachines.com